

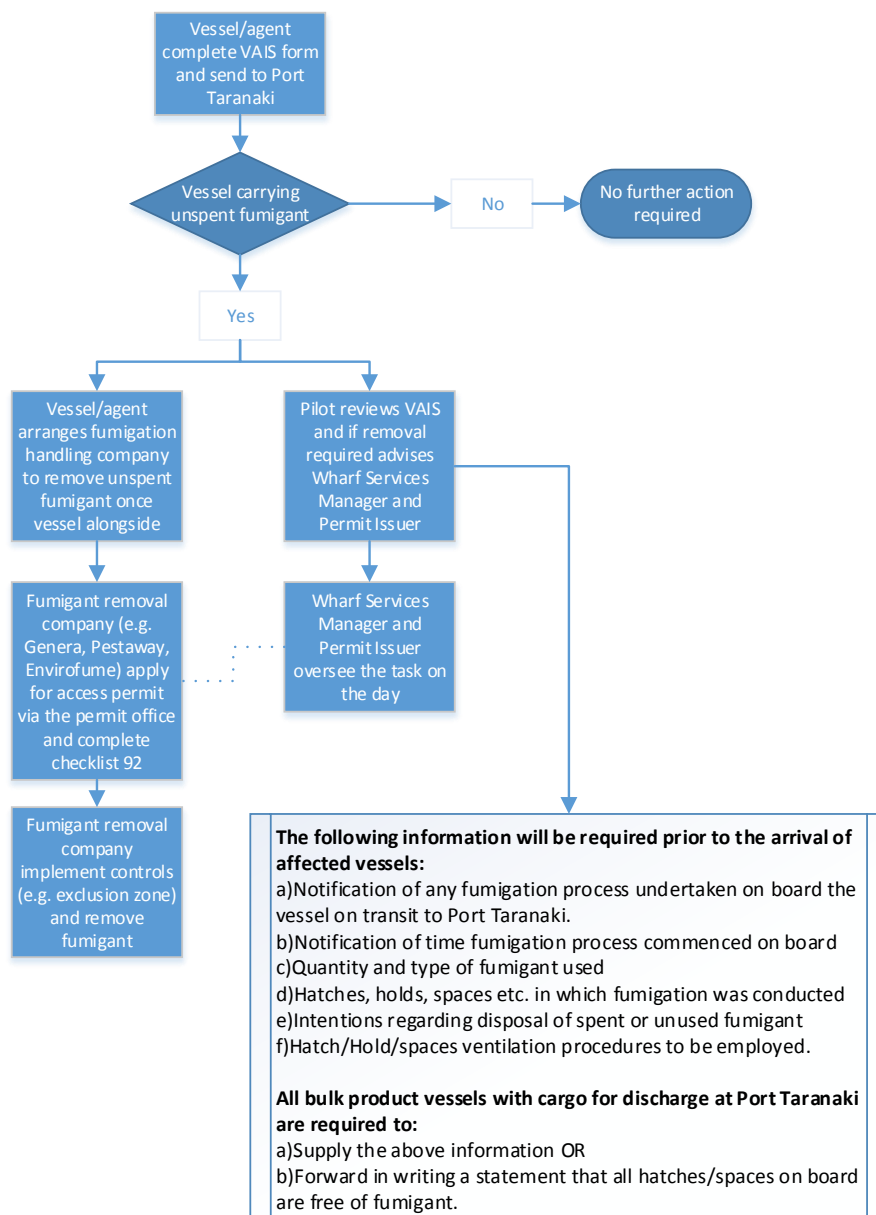
**Work Area:** Various visiting vessels

**Equipment Required:** Barriers to cordon off the wharf area

**HSE Considerations:** Potential exposure to fumigant requires the use of Checklist 92.

**Responsibilities:** As outlined in flowchart below.

**Actions:**



**In Emergency:** Call the Port Emergency number (06) 751 0200 extension 8.