

CRUISE INTO TARANAKI

DISCOVER YOUR
NEXT UNIQUE
CRUISE DESTINATION

TARANAKI

like no other

NAU MAI, HAERE MAI WELCOME TO TARANAKI

Taranaki is as vibrant as it is peaceful. An extraordinary region with abundant nature, remarkable history, unique events and unrivalled experiences – not to mention a distinctive mountain-to-sea lifestyle.

Discover our line-up of new products and familiarise yourself with our diverse trade-ready operators, as well as our passionate, and flourishing visitor and hospitality industry. We continue to surprise and delight travellers with all we have on offer, and leave a lasting impression with our like no other natural landscapes, arts and culture, food and hospitality, and vibrant events.

Interest in the region is at an all-time high, and a series of targeted media campaigns have helped ensure the Taranaki region and its stories remain in the minds of travellers looking to do something new.

Taranaki welcomes domestic and international visitors year-round. Although national visitation is much higher, international visitation and interest is growing with visitors looking for new and less travelled destination options that offer unique and authentic experiences.

Taranaki has so much on offer, all year round. We're a hospitable and welcoming bunch, and when it comes time for our manuhiri (visitors) to go, we'll send them off with a nourished, replenished, and energised spirit.

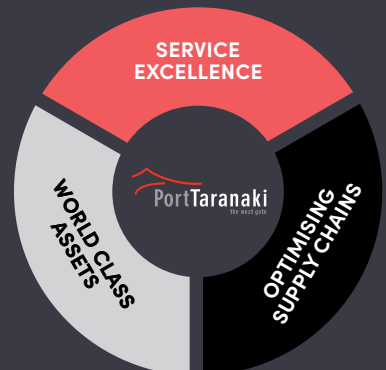


Port Taranaki is the only deep water sea port on the west coast of New Zealand and can serve as your first port of call on arrival or last port of call – connecting directly to Australia and the Pacific Islands.



PORT TARANAKI COORDINATES
39°03.5' S, 174°002' E

NAUTICAL MILES FROM PORT TARANAKI
To Brisbane – 1255
To Sydney – 1153
To Tauranga – 577
To Wellington – 172
To Nelson – 148



PORT TARANAKI – OPEN FOR BUSINESS AND COMMITTED TO CRUISE EXCELLENCE

Port Taranaki gives its commitment to making berth space available to fit your cruise itinerary and provides a gateway to the world's #2 region with the #1 hosts.

Within the Blyde Wharf exists a 300m berth and draft of 12.50m to cater for the majority of cruise ships touring New Zealand waters.

Port Taranaki provides wharf facilities designed with safety in mind. A securely fenced barrier guides passengers off the ship to outside of the Port area. Shuttle buses for Shorex are also able to collect passengers at the bottom of the gangway.

Information staff are available on site, to come on board, or be present at the bottom of the gangway to greet departing passengers and provide advice and answer queries.

Foreign speaking cruise vessels are also catered for via translated promotional brochures about the region. Information staff with the ability to translate can also be made available.

Port Taranaki appreciates that all cruise ships have unique passenger and crew requirements and a dedicated Customer Relationship Manager is available to ensure each experience is catered for, specifically tailored to each ship. Full customs services operate at Port Taranaki to cater for first port of call cruises.



LEGEND

Road Access

(For Passenger Transportation)
Rail Access

Pedestrian & Cycle Access

New Plymouth

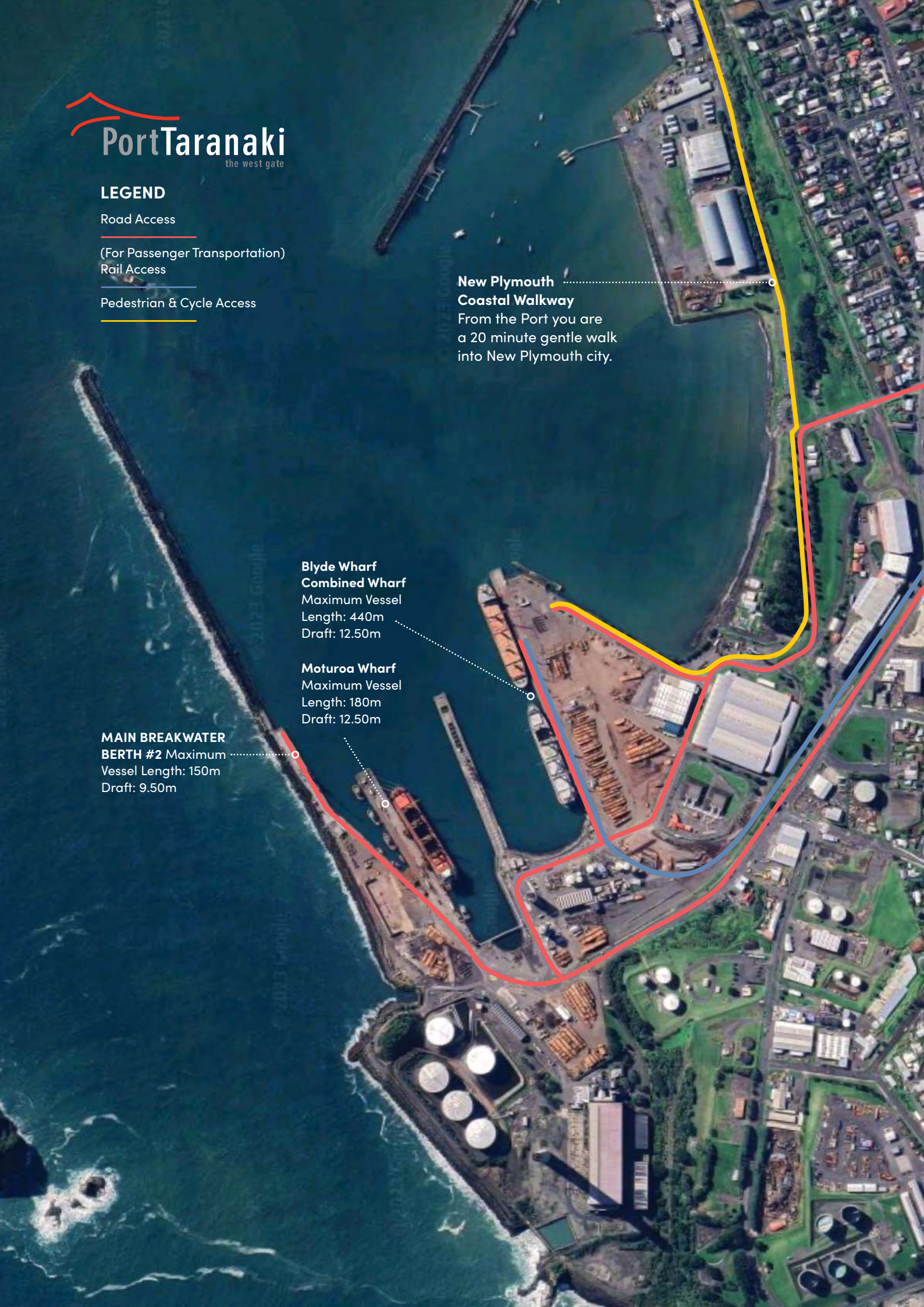
Coastal Walkway

From the Port you are
a 20 minute gentle walk
into New Plymouth city.

**Blyde Wharf
Combined Wharf**
Maximum Vessel
Length: 440m
Draft: 12.50m

Moturoa Wharf
Maximum Vessel
Length: 180m
Draft: 12.50m

**MAIN BREAKWATER
BERTH #2** Maximum
Vessel Length: 150m
Draft: 9.50m





Port Taranaki is committed to providing world class assets backed by service excellence. The Pilot Launch “Mikotahi” and the Tractor Tug “Kinaki”. are testimony to this. As ships have increased in size the power needed to manoeuvre them in Port has also increased. To address that, Port Taranaki has made a significant \$12 million

investment in the Kinaki. Built by Sanmar Shipyards, she delivers a maximum bollard in excess of 60 tonnes, and includes Caterpillar engines, Rolls Royce propellers and an electric towing winch by DMT. The Mikotahi and Kinaki provide our customers with superior assurance when entering and exiting Port Taranaki.

MIKOTAHI

GENERAL DETAILS

VESSEL TYPE	Pilot Launch, Personnel transfer
CONSTRUCTION	Welded Marine Grade Aluminium. Floating Wheelhouse
YEAR BUILD / BUILDER	2014, Q-West Ltd, Wanganui, NZ – Designer: Camarc design, Scotland. CLASS Lloyd’s Register +100A1 SSC PILOT MONO HSC G3 MCH MNZ 40c
OPERATING LIMITS	NZ Restricted Coastal Limits – Manukau Heads to Wanganui River
SEA SPEED	Operating 24.5kt at 2050rpm (MCR) – Sprint Speed 33kts at 2300rpm
RANGE	15hrs at 24kts 360miles
CABIN SOUND LEVEL	69 dBa (LEQ)
DIMENSIONS	19.5m x 5.7m x 1.0m Draft

MACHINERY

MAIN ENGINES	2 x Scania DI16 M72
PROPELLERS	2 x Hamilton HM461 Jet Units

ACCOMMODATION/LSA EQUIP.

GENERAL	LSA and Certificate for 9 persons
SEATING	Suspension seating for 2 crew plus 5 Passengers (2 more can be fitted)
LIFERAFTS	2 x 12 Man RFD
FIRST AID	MNZ Category 1
MOB	Transom mounted hydraulic personnel recovery system.



KINAKI

GENERAL DETAILS

VESSEL TYPE	Harbour Tug, Lloyds +100A1 Tug
DESIGN	Robert Allan TRAKtor 2500SX
YEAR BUILT/BUILDER	2017, Sanmar, Istanbul, Turkey – Delivered to Port Taranaki July 2018
OPERATING LIMITS	Restricted Coastal – 75nm radius from Port Taranaki
DIMENSIONS	25.3m x 12m x 6.1m draft

PERFORMANCE

BOLLARD PULL	60 T
SEA SPEED	11 kts

TANK CAPACITIES

FIRE FIGHTING FOAM – AFFF	3900 ltrs
WASTE OIL AND BILGE WATER	8000 ltrs

MACHINERY

MAIN ENGINES	2 x Caterpillar 3512c, 1900kW @ 1800 rpm
PROPELLERS	2 x Rolls Royce 205 CP controllable pitch azimuth thrusters

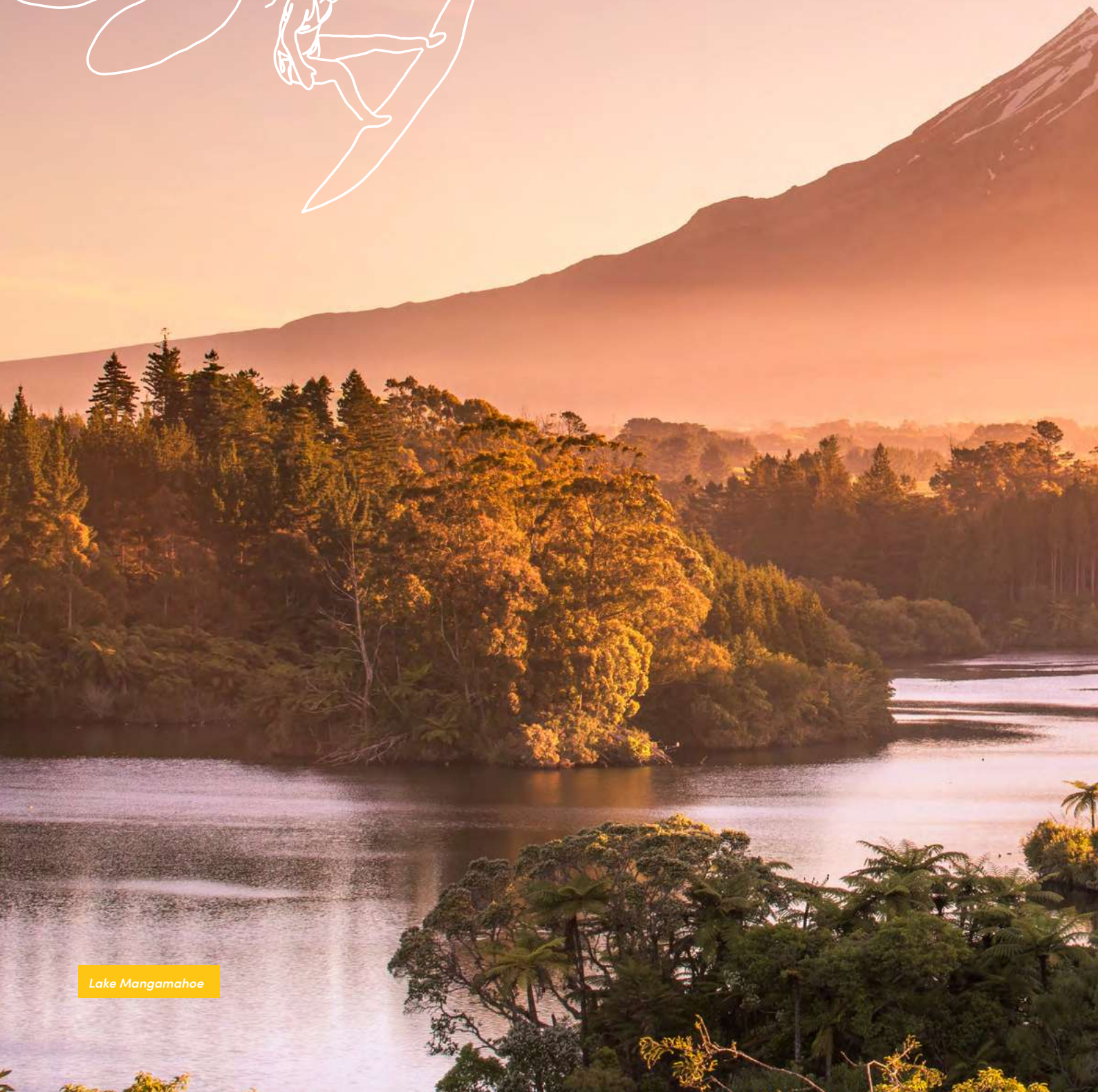
DECK EQUIPMENT

TOWING WINCH	DMT Electric winch
TOWING ARRANGEMENT	2 x 150m x 60mm Dyneema with 15m pennant

FIRE FIGHTING

TOTAL CAPACITY	22,000litres/min
PUMPS	1 X 1400m ³ /hr- Main Engine Driven
MONITORS	1 X FFS Remote operated
FOAM INDUCTION	‘Round the Pump’ – 3%

TARANAKI: OUR ANCESTRAL MAUNGA



Lake Mangamahoe

Before man walked upon the shores of Aotearoa it is said that many magnificent mountain gods lived in the centre of Te Ika a Maui – the fish of Maui (the North Island). The male maunga of Ruapehu, Tongariro, Ngauruhoe, Taranaki and Tauhara stood proudly on the Central Plateau, alongside a lone female mountain Pihanga.

All the maunga wanted to win the heart of the striking Pihanga, but none more so than Taranaki and Tongariro. The two fought so fiercely for her love that the earth shook, lightning crashed, and lava flowed down the warring maunga.

Despite a long, and fierce challenge from Taranaki, Tongariro emerged victorious, and a defeated Taranaki was banished to the west – led to safety by te Toka a Rahotu, a large boulder that guided Taranaki to his new home on the west coast and to where he stands today. As he travelled it is said Taranaki carved out the Whanganui River, before he settled beside the beautiful mountain range Pouākai, who put his arm around Taranaki and embraced him.

These days the 2518m volcanic peak – which last erupted in 1755 – offers countless adventures through untouched bush and alpine environments. To get the full story, head to one of the Department of Conservation visitor centres at the top of the North Egmont or Dawson Falls mountain access roads, or stop in at the Stratford Mountain House.



The summit of Taranaki Maunga reflected in the Pouākai Tarn – mirror lake – part of the Pouākai Crossing, the one-day walk that is gaining popularity as one of New Zealand's top walks.



Taranaki has a maunga to moana lifestyle, unique to anywhere else in New Zealand.

PASSENGER AND CREW SUPPORT INFORMATION

EMERGENCY

The emergency telephone number in New Zealand is 111. It is a free phone call. If you have an emergency and need a quick response from the Police, the Fire Service, Ambulance or Search and Rescue, dial 111.

MEDICAL

Taranaki Base Hospital

Taranaki's main regional hospital, located in New Plymouth. Distance from Port Taranaki – 3.3km (7 minute drive) David Street, New Plymouth (06) 753 6139

MediCross Urgent Care & GP Clinic

An urgent care and multi-doctor General Practice Centre. MediCross is a 12 hour, 7 days a week Urgent Care Centre with a no appointment necessary policy.

Distance from Port Taranaki – 4km (7 minute drive)
8 Egmont Street, New Plymouth
(06) 759 8915

Phoenix Urgent Doctors

A 12 hour, 7 days a week Urgent Care Centre with a 24 hour on call service. Visitors from outside Taranaki or overseas are welcome to attend any time during open hours without an appointment. After hours visits to hotels etc. can be arranged.

Distance from Port Taranaki – 4.2km (8 minute drive)
95 Vivian Street, New Plymouth
(06) 759 4297

Taranaki Community Rescue Helicopter

The Taranaki Rescue Helicopter is available for emergency air ambulance response, search and rescue and inter-hospital transfers. Dial 111 for assistance from the Taranaki Rescue Helicopter.

Distance from Port Taranaki – 3.3km (7 minute drive) Hangar Complex is at Taranaki Base Hospital, David Street, New Plymouth
(06) 753 7620

PHARMACIES

Unichem Pharmacy

Distance from Port Taranaki – 1.6km (3 minute drive)
492 St Aubyn Street, Moturoa, New Plymouth
(06) 751 0074

Hours: Mon-Fri: 8:30am-5:30pm Sat: 9:00am-1:00pm | Sun: Closed

Life Pharmacy

Distance from Port Taranaki – 4.5km (8 minute drive)
Inside the Centre City Shopping Centre, Shop 13,
11 Gill Street, New Plymouth
(06) 759 4023

Hours: Mon-Wed: 9:00am-5:30pm | Thurs: 9:00am-8:00pm
Fri: 9:00am-5:30pm | Sat: 9:00am-5:00pm
Sun: 10:00am-4:00pm

City Care Pharmacy

Distance from Port Taranaki – 4km (7 minute drive)
10 Egmont Street, New Plymouth
(06) 757 4614

Hours: Mon-Sun: 8:30am-9:00pm

SUPERMARKETS

New World

78 Courtenay Street
Distance from Port Taranaki – 4.8km (9 minute drive)

Pak n Save

53 Leach Street
Distance from Port Taranaki – 5.1km (10 minute drive)

Countdown

174 Courtenay Street
Distance from Port Taranaki – 5.1km (10 minute drive)



SOME OF THE BEST BITS OF TARANAKI

PICTURE-PERFECT MOUNTAIN

The 2518m peak of Taranaki Maunga and the surrounding Egmont National Park offers everything from cafes and a Mountain House with spectacular views, to a winter ski-field and over 200km of walking and hiking trails.

RICH IN CULTURE AND HISTORY

From the volcanic cone of Taranaki Maunga to ancient hilltop Māori fortresses, Taranaki is rich in history. Start at Tawhiti Museum and Puke Ariki, two of New Zealand's best.

ARTS AND EVENTS

There are many opportunities to discover the arts and culture scene in Taranaki, from galleries and studios to spectacular concerts and events like the annual WOMAD festival.

A NATURAL PLAYGROUND

An undiscovered outdoor playground with Taranaki Maunga at its heart, Taranaki offers many outdoor adventures in its parks, gardens, rivers, lakes and beaches.

GARDEN DELIGHTS

The gardens in Taranaki are so spectacular they have their own festivals. The annual Taranaki Garden Festival showcases more than 50 of the region's best every spring.

A BITE OF THE GOOD LIFE

The food, beverage and hospitality scenes in Taranaki are exploding. Fresh, innovative, creative, and diverse, Taranaki has something for all tastes and seasons, found at any one of the cafés, specialist eateries or bars across the region.

WALKING CHOICES

Experience the real Taranaki by foot. From the award-winning 13km New Plymouth Coastal Walkway to the spectacular 2-day Pouākai Circuit, the region offers many great walks for all levels of fitness or adventure.

A HOLE IN ONE

The region boasts 20 golf courses from the championship Ngāmotu Links in New Plymouth to more grass-roots coastal 9-hole courses with their own unique natural hazards. All have a guaranteed view of the mountain.

THE SURF HIGHWAY

The coast of Taranaki boasts countless surf breaks and even more spots to stop and enjoy a picnic, pick up a coffee at a cool coastal cafe, or stay a night or two to enjoy the legendary landscape, all connected by Surf Highway 45.

THE FORGOTTEN WORLD

Linking Taranaki with the central North Island, the Forgotten World Highway is New Zealand's oldest heritage trail, and passes dozens of natural and historic points of interest, including the Republic of Whangamōmona.





GOVETT-BREWSTER ART GALLERY / LEN LYE CENTRE

The Govett-Brewster Art Gallery / Len Lye Centre is an art museum that presents a range of exhibitions focused on contemporary art of the Pacific and beyond. The gallery is also home to the life work and archives of artist Len Lye (1901-1980) whose influential film works and pioneering kinetic sculptures are on exhibit in the architecturally acclaimed Len Lye Centre.

The Gallery presents a range of trade-commissionable tour itineraries, which can extend to fit your clients' needs through the addition of film screenings, art-making classes, a meal at the Gallery's celebrated Monica's Eatery, or inclusion of the Gallery's art publishing.

TOUR NOTES:

All tours are presented by trained members of the Gallery's team

All tours are available 7-days a week during opening hours – 10am – 5pm

Tours are suitable for 2 – 24 people

Tours can cater to a wide range of accessibility levels

Bookings require at least 48-hours' notice, though seven-days' notice is preferable.

The team is highly responsive to out-of-the-box tours and visitor hosting

The gallery's exhibitions change three times a year – some tours may be unavailable during these periods

All tours include gallery admission.



PRODUCTS/TOURS

Beyond standard entry the Govett Brewster Art Gallery/Len Lye Centre offers a guided group tour that really gets top the heart of the art.

THE GRAND TOUR

The Gallery's experienced guides will lead you through the stories of the Govett-Brewster Art Gallery which transformed from ground-breaking cinema to leading contemporary art museum and explore the stunning architecture of the Len Lye Centre and its innovative use of the 'local stone'. From there groups will take in the mix of Len Lye exhibitions – discovering the story of New Zealand's greatest international artist, pioneering filmmaker, and bold kinetic artist before moving into the contemporary art spaces and exhibitions to get a pulse check on the latest in art and ideas from New Zealand's top contemporary art museum.

Time: 60 mins in duration though flexible to meet your available window.

Availability: Available year-round between 10am and 4pm. Please note that exhibitions change 3 times a year (late March, late June, late November) which may limit the number of gallery spaces available.

Booking: 48 hours minimum – at least 7 days preferred
Minimum: 2

Maximum: 24 – larger groups can be accommodated, but may be broken into smaller tours

Rack rate: \$25 per person – includes Gallery admission of \$15

Trade rate: \$17.50 per person (30% commission)

Bonus: a free 30-minute documentary on the life and legacy screens at 1pm daily in the Gallery's Cinema – a great addition to the tour at no extra cost

Where to book: Contact the Gallery

CONTACT

Fran Mowforth, Visitor Services Coordinator

Email: venues@govettbrewster.com

Tel: + 64 6 759 0854

Web: govettbrewster.com

Location: Corner of King and Queen Streets, New Plymouth CBD

THE POUĀKAI CROSSING

– SELF LED

Mount Taranaki's Pouākai Crossing is gaining momentum as one of New Zealand's greatest one-day walks. Best suited for those with a reasonable level of fitness, the walk crosses the slopes of Mount Taranaki, taking around eight hours to complete.

Beginning at North Egmont Visitor Centre, the crossing heads up and across Mount Taranaki, with stunning summit and landscape views varying from alpine to lush forest as the route passes beneath towering lava cliffs and over the remarkable Ahukawakawa Wetlands. Holly Hut offers a handy mid-point, and the scenic highlight is the Pouākai Tarn – mountain lake – which can offer a spectacular reflection of the 2518m summit.

Weir Tours can offer a return shuttle to your customer's accommodation.

THE POUĀKAI CROSSING LATE SPRING, SUMMER AND EARLY AUTUMN

This one-day walk across the northern side of Mount Taranaki takes you on a 19km trek through landscapes ranging from the montane forest and subalpine scrub, beneath towering lava columns, across active erosion scars, and through a scenic alpine wetland. The unique flora along the route makes it a lesson in botanical adaptation. After crossing the unique Ahukawakawa Wetland, the climb up on to the Pouākai Plateau offers breath-taking views of the route, with Mt Taranaki as a backdrop, and the opportunity for the postcard-perfect shot of the mountain reflected in the tarn – alpine lake – on top of the plateau. The route is challenging and requires a high level of fitness. Departing from North Egmont Visitor Centre, walkers will require comfortable and waterproof hiking shoes, rain and sun protection, food and water, a backpack and suitable hiking clothing.

Time: 7-9 hours

Best time to walk: The late spring, summer and early autumn period

Transport Cost: \$50 per person

Minimum numbers: 5 people

CONTACT

For information please contact:

Callum Chapman, Operations Manager Weir Bros

Email: weirbros@xtra.co.nz

Tel: 027 645 7824



WEIR TOURS

PRODUCTS

TARANAKI ART & GALLERY TOUR

Enjoy a guided tour of New Plymouth's Art Trail as your coach delivers you from your ship into central New Plymouth to explore the heart of the city and its vibrant galleries, fashion boutique's N.Z design's store, bespoke jewellers, and one of New Zealand's leading Contemporary art museums and galleries. The Coach will be met by Artists from Koru galleries who can guide visitors to all points of interest including coffee stops if required. All businesses are within 2 blocks of easy walking. The bus will pick up at Govett-Brewster Art Gallery | Len Lye Centre for the next sector. Including lunch and afternoon treats.

Meet your transport outside the Govett-Brewster Art Gallery | Len Lye Centre, and travel around Taranaki's legendary coastline, with views of Mt Taranaki and the Tasman Sea, past famous surfing beaches, to Taranaki's top vineyard Okurukuru for a light lunch and wine tasting.

Discover the Coast's Creatives! Visit the studio of local glass artist Richard Landers, a master's in creative and traditional glass sculpture inspired by Taranaki's unique landscape. Explore the Koru on Koru Gallery, on the slopes of the Mountain, to discover the art of Lester Earl and leading local artists. Take a walk through Oakura Village, Butlers Reef Hotel serves Cool beer, Crafty Fox New Zealand gift store full of surprises, Feel the sand between your toes on the famed Oakura Beach.

Length of tour: 7 hours

Cost: \$275 per person

Includes – transport to and from the port, tour of Art Galleries with local guides & expert knowledge, lunch at local Restaurant)

Minimum: 20 people

Maximum: 40 people on each coach.

COASTAL TARANAKI

Discover the rugged coast of Taranaki as we venture to one of Taranaki's hidden gems the Pihama Lavender Farm, here Liz will give an amazing talk about Pihama Lavender and her passion for what she does. Here you will have a chance to check out the amazing gift store on offer before heading back north stopping off at in Opunake where you have a chance to stretch the legs and take in what this quaint town has to offer.

Length of tour: 7 hours

Cost: \$280 per person

Includes – transport to and from the port, Tour of Pihama Lavender, LWF Boutique Distillery

Minimum: 20 people

Maximum: 49 people.

TAWHITI MUSEUM & CULTURAL TOUR

Taranaki is enriched with local history and Māori Land wars. Let us help you discover our local history as we venture South where you will be taken to one of the gems of Taranaki Tawhiti Museum, this museum gives you a truly unique experience, the creation of Artist Nigel Ogel, its attention to detail is simply stunning. There is a café on site for this who would like a light refreshment. Following the Museum Visit you will be welcomed onto Taiporanui Marae for some real Māori Hospitality where you will enjoy some of the stories of the past and local history as well as a performance by The Patea Māori Club as you enjoy a traditional Māori feast (Hangi).

Length of tour: 7 Hours

Cost: \$295 per person

Includes – Coach transport to and from the Port, Tawhiti Museum, Marae Visit,

Minimum: 25 people

Maximum: 98 people.



CONTACT

For information please contact:

Callum Chapman, Operations Manager Weir Bros

Email: weirbros@xtra.co.nz

Tel: 027 645 7824

All costs retail



AUTHENTIC TARANAKI EXPERIENCES

Tour Groups

Cruise Ship Packages

Private Groups

We provide tours for tour companies, cruise ship visitors and private groups, whether small or large. The experiences we offer focus on the best of Taranaki from outdoor walks and garden visits to art and food tours. Our local networks and relationships ensures we offer a quality authentic Taranaki experience

On the following page are examples of some of the tours on offer and other tours are by arrangement. Please visit discovertaranaki.nz to get in contact



PRODUCTS

PUKEKURA PARK + HIGH TEA

New Plymouth's central Pukekura Park is ranked as Taranaki's top attraction by Trip Advisor, is recognised as a five-star garden of national significance, and its cricket ground is known as one of the best places to watch cricket in New Zealand. This tour of the park, led by an expert guide, will introduce you to Pukekura Park's rich history, its extensive flora, works of art and man-made and natural attractions. The tour will culminate with high tea at the iconic Teahouse on the Lake.

Time: 2 – 2.5 hours

Availability: By arrangement

Minimum: 4

Maximum: Flexible

Cost: \$110 per person

TASTE OF TARANAKI TOUR

Visit four of Taranaki's food producers over a half day or full day experience. These will include a range of the following based on availability and the size of the group, -a local coffee roastery, a chocolatier, a honey producer, a herb or citrus growing operation, ice cream makers, local gin or rum distilleries, local brewers or a wine and cider producer. Juno Gin – a leading gin distillery winning recognition for its fine gin and seasonal varieties. Here you will get a tour of their premises and hear more about the making of their products before enjoying a tasting of the products.

Time: 4.5 – 5 hours

Minimum: 6

Maximum: Flexible

Cost: By negotiation depending on numbers and time allowed. Includes all transfers, morning or afternoon tea, all tastings and some product samples.

THE GG TOUR (GARDENS AND GIN)

Enjoy a guided tour of New Plymouth's Pukekura Park. Located in the heart of New Plymouth this park is a GARDEN OF National Significance with a 5 star rating from the New Plymouth Gardens Trust and has held the International Green Flag award for nine years running. Covering 52 ha the park has an amazing range of native and exotic plants displayed in a natural setting. Also in the park are 3 fernery and display houses which have been a must see for almost a century.

Following this enjoy a full distillery tour of JUNO Gin. JUNO's Extra Gin is synonymous with winning awards in New Zealand and internationally, and has been chosen by the NZ Gin Guide as their Taster's pick for the last 2 years running. The triple distilled, London – dry style gin is crafted in Taranaki by the JUNO Gin team Dave and Jo using pure New Zealand Mountain water, botanicals – fresh, local and hand selected.

Length of tour: 4 hours

Cost: \$150

Includes – transport, tour of Pukekura Park with a guide, gin cocktail, canapes, gin, tastings & tour)

Minimum: 8 people

Maximum: 20 people.

WALKING BREWS AND WINE TOUR

New Plymouth has a range of craft breweries and a winery where the brewers and wine maker are happy to share their knowledge about what separates a Pilsener from a lager and all the varieties in between. Visit two of New Plymouth iconic brewers and an urban winery specialising in lo-fi wine and cider.

Length of tour: 3 hours

Cost: \$150

Includes – 3 meet the brewer and wine maker visits with tastings and some food

Minimum: 4 people

Maximum: flexible.

CONTACT

Cathy Thurston, Director

Email: cathy@discovertaranaki.nz

Tel: 0272 410458

Web: discovertaranaki.nz

Location: Throughout Taranaki

All costs retail



EGMONT TRAVEL GROUP

Egmont Travel Group offers a range of hands-on experiences, immersing customers into the day-to-day activities of the region.

Depending on the season, this can include checking over beehives with the beekeeping teams, dairy farm tours, overnight stays in remote bush huts and much more.

There's not much in the area that the team don't cover. The most popular activity by far is the tour of Egmont Honey's state-of-the-art factory and processing plant, where guests are shown the unique honey making process and treated to a tasting experience covering a huge variety of honeys.

PRODUCTS

FULL DAY BEEKEEPING AND FACTORY TOUR

You will be picked up from your accommodation between 9am and 10am (time confirmed at booking). Or you can meet at the CBD shop-front at 66 Devon St West, New Plymouth. Visit beehives on a farm by taking an off-road vehicle into remote countryside where you can see the day-to-day operations of real working beehives. Get kitted out in a bee suit and open the beehive under the guidance of an experienced beekeeper. Eat some honey straight from the honey frame – just as nature intended! Learn the different components of the beehive and find the Queen Bee. Take the ultimate selfie photo in your bee suit with thousands of bees flying around your head. Finish with a bush walk identifying the Manuka tree, Rewarewa tree and other famous trees that make our honey so delicious. Visit the Egmont Honey factory to watch the entire honey making process through our famous glass wall packing rooms and finish the tour with a honey tasting experience where you can try up to eight different honey types. You will be given a jar of Egmont Honey's delicious RAW honey for free to take home and share with family (or not share as it's sooo good). Finally, if you want more you can watch a hive-to-pot experience in 3D using the unique virtual reality goggles. A seriously cool experience.

Time: 6 hours

Availability: By Arrangement

Minimum: 2

Maximum: Flexible

Cost: \$165 per person

Factory Tour only

Time: 40mins

Availability: Tours available everyday

Minimum: 2

Maximum: Flexible

Cost: \$25 per person

OVERNIGHT BUSH STAY

You will be picked up from your accommodation between 9am and 10am (time confirmed at booking). Or you can meet at the CBD shop-front 66 Devon St West, New Plymouth. Drive into the remote South Taranaki hill country valleys, approximately one hour travel time. The Ute will be left behind and you will embark on a 3-hour trek into the native bush. (If you don't fancy a bush walk then you will get pretty close with the off-road vehicles). Once at the hut the guides will light the fire in the hut and boil the hot water for a nice cup of tea. They will then prepare an amazing casserole in the bush oven and leave it to simmer for a few hours before dinner. This world famous casserole has had rave reviews from people all over the world. There are a number of remote bush walking tracks around this hut that you can experience or, alternatively, you can sit back, relax and read a book surrounded by nothing but bird song. You are likely to see wild deer, goats and pigs on a typical walk into our hut. For the adventurous, ask about adding on a wild jet boat ride up a South Taranaki river.

Time: Overnight

Availability: By arrangement

Minimum: 2

Maximum: Flexible

Cost: 1 night \$370 per person
2 night \$500 per person

HONEY TOUR HALF DAY EXPRESS TOUR

Meet at the Egmont Honey factory factory in New Plymouth. You will visit some beehives close to New Plymouth on one of the pasture honey sites and then visit the Egmont Honey factory to watch the entire honey making process through the famous glass wall packing rooms. Finally, if you want more you can watch a hive-to-pot experience in 3D using the unique virtual reality goggles. A seriously cool experience.

Time: 2.5 hours

Availability: Tours available everyday

Minimum: 2

Maximum: Flexible

Cost: \$75 per person

SHEEP AND BEEF FARM TOUR

You will be picked up from your accommodation between 9am and 10 am (time confirmed at booking). Or you can meet at our CBD shop-front at 66 Devon St West, New Plymouth. Head out to a Taranaki hill country sheep and beef farm, approximately one hour drive. Take part in whatever activities are happening on the day. Nothing is fabricated at Egmont Honey Tours. If they are shearing sheep, you will be in the woolshed lending a hand. If they are mustering sheep with their packs of dogs, you will be right alongside the action. Finish the morning with a lunch of beef steaks and fresh lamb chops on the BBQ (depending on package) surrounded by beautiful hill country and native bush. (vegetarian options available).

Time: 4 hours

Availability: By Arrangement

Minimum: 2

Maximum: Flexible

Cost: \$200 per person

All products – Commission: 20%

CONTACT

James Annabell

Email: james@hivedevelopments.co.nz

Tel: 021 088 20967

Web: egmonttravel.com

Location: 66 Devon St W,
New Plymouth 4310

All costs retail

PUKE ARIKI

MUSEUM, LIBRARY AND ISITE

Puke Ariki is an innovative museum, library and information centre that combines learning, knowledge, resources and heritage objects for a visitor experience that is like no other.

Three long term exhibition galleries explore Taranaki's past, present and future – the Taranaki Life gallery contains a treasure trove of items telling the European story of those who have lived, worked and played under the benevolent gaze of Taranaki Maunga.

Taranaki Naturally showcases Taranaki's rich landscape and how violent and hostile natural events have turned into the rich and fertile region we know today. Featured in this space is the Ko Taranaki te Mounga (The Taranaki Mountain) gallery which demonstrates how much of an influence the mountain has on the regions and its people.

Reef Alive is the newest addition which explores the South Taranaki Bight and the rich marine biodiversity. It is a highly interactive experience that takes you through the journey of the marine scientists and researchers and various methods used to understand the abundance of this underwater wonder.

Te Takapou Whāriki o Taranaki (The Sacred Woven Mat of Taranaki) – this gallery tells the story of times past, of conflict, of belief, of sorrow and of hope for the future from the Māori worldview. The famous Motunui epa are on show here, along with the most extensive whakairo rākau (wood carving) collection of taonga showing the regionally distinctive north Taranaki style.

Pick up a memento for yourself or a gift for a loved one from the Puke Ariki Store. A retail destination that carries an extensive range of New Zealand and local books, jewellery, selection of children's games and art pieces from local artists and designers.

There is also a wonderful restaurant with sea-views, on-site and fully accessible.

MUSEUM OPENING HOURS

Open daily 10–5pm. Closed Christmas Day.





PRODUCTS

PUKE ARIKI HISTORICAL WALK

This guided tour takes you through central New Plymouth with an experienced local guide relating events, developments and anecdotes – from the first settler’s arrival in New Plymouth in 1841 through to the early 1900’s and the birth of the new city. Hear stories of desperate isolation, battles, colourful characters and small triumphs as a fledging community struggled to find its feet and grow. This walk includes a small hill climb of moderate incline. Your trip back in time is marked with an illustrated booklet that contains more fascinating stories. The Historic Walk Booklet can be purchased separately for \$10.

Time: Each walk is around 2km long and takes about two hours.

Availability: A guide can be made available daily with 24hrs notice. Bookings essential.

Minimum: 2

Maximum: 15. Larger groups can be accommodated (Bookings required two weeks prior)

Cost: \$15 per person (excluding the Historic Walk Booklet) Under 16s are free.

Cancellation policy: 24 hours notice (48 hours for groups)

Where to book: New Plymouth isite, Ariki Street, Puke Ariki, i-site@npdc.govt.nz, 06 759 6060.

CONTACT

Email: i-site@npdc.govt.nz

Tel: 06 759 6060

Web: pukeariki.com

Location: New Plymouth isite, Ariki Street, Puke Ariki

All costs retail



OTHER UNMISSABLE ATTRACTIONS

TE KAINGA MARIRE GARDEN TOURS AND TASTINGS

Situated in a once weedy New Plymouth valley, Te Kainga Marire is one of very few private six-star gardens as rated by the prestigious RNZIH New Zealand Gardens Trust. It was New Zealand's sole NZ Native Garden entry in BBC's 'Around the World in 80 Gardens'.



GUIDED TOUR

Receive a guided tour of Te Kainga Marire (Māori for peaceful encampment) – one of only six 6-Star rated gardens in New Zealand – from the garden's creator Valda Poletti. Discover the stories behind the garden's distinctly Kiwi design, its transformation from a patch of clay, the plants within it and the rich native birdlife the garden has attracted back to the remarkable site. **\$25 per person, (\$4.50 commission), includes garden entry.**

TASTING TOUR

Follow your guided tour of the internationally acclaimed Te Kainga Marire with morning or afternoon tea featuring foods created from traditional Māori ingredients sourced from the garden and the best of local produce. Sample native New Zealand ingredients alongside delicious home-prepared food, surrounded by this spectacular garden, rich in native birdlife.

\$45 per person (\$9 commission), includes garden entry and guided tour.

CONTACT

Valda Poletti

Address: 15 Spencer Place, New Plymouth

Phone: +64 6 758 8693 or +64 27 588 9003

Email: valda@tekaingamarire.co.nz

Web: tekaingamarire.co.nz

Opening hours: Open Daily 9am-5pm from Sept to April



Traders & Whalers ride at Tawhiti Museum

TAWHITI MUSEUM/TRADERS & WHALERS

Tawhiti Museum has long been a Taranaki must-do and has been recognised as the third best museum in New Zealand by Trip Advisor users, right behind Te Papa in Wellington and Auckland Museum, making it the country's best privately-owned museum.

Tawhiti Museum is a truly unique experience. The innovative and interactive museum uses dozens of life-size exhibits and hundreds of scale models and thousands of authentic artefacts to capture the past in a series of super-realistic displays.

While the museum, working railway, machine hall, café and on-site pottery studio are fascinating, it's the museum's Traders & Whalers ride that is truly spectacular. Visitors walk down through underground tunnels (modelled by Weta Workshop) and enter an underground canal-boat ride through Taranaki's heritage.

Entry fee:

Museum \$20, Traders & Whalers \$20
Bush Railway: \$10 Adults, \$5 Children



CONTACT

Nigel and Theresa Ogle

Address: 401 Ohangai Road, Hāwera, South Taranaki

Phone: +64 6 278 6837

Email: info@tawhitimuseum.co.nz

Web: tawhitimuseum.co.nz

Opening hours:

10am – 4pm every day from Boxing Day to 31 January

10am – 4pm Friday – Sunday 1 February – 31 May,

1 September – Christmas Eve

10am – 4pm Sundays only during June, July and August

SKYWORKS

OTHER TARANAKI ACTIVITIES & ATTRACTIONS

RINGCRAFT MOANA TOURS

Take a look behind the scenes of a manufacturing jewellery business. Jeweller Rob Wright will guide you through the process of creating beautiful one-off jewellery and you will be able to swing a hammer and roll out metal to create your own unique piece of jewellery.

CONTACT

Rob Wright or Belinda Lubkoll

Email: Ringcraft@xtra.co.nz

Web: ringcraftmoana.com

NEW PLYMOUTH COASTAL WALKWAY

Explore New Plymouth's award-winning 13km Coastal Walkway. Highlights include Len Lye's iconic Wind Wand sculpture, the stunning Te Rewa Rewa Bridge and Bell Block's Cycle Park, plus Breakwater Bay, a collection of dining options and retailers at Port Taranaki.



HILLSBOROUGH HIDEAWAY

Visit The Hideaway on the outskirts of New Plymouth to enjoy the immaculately displayed personal collection of Holden cars at the Hillsborough Holden Museum, the Hideaway Luge and Mount Panorama Mini-putt. Refuel at the onsite Hideaway Cafe.

CONTACT

Steve Fabish

Email: joyfabish@farmside.co.nz

Web: hillsboroughholdenmuseum.co.nz



HOME OF EPIC EVENTS

YEAR ROUND, THERE'S A LOT TO SEE AND DO IN TARANAKI.

SUMMER

THE GOOD HOME TARANAKI OFF-ROAD HALF MARATHON

Take in some spectacular Taranaki scenery while completing 5km, 10km or 21km circuits.

taranakitrailrun.co.nz

ARTS IN THE PARK

Held in Hāwera on the first Saturday of December there are plenty of art and craft stalls to enjoy.

TSB FESTIVAL OF LIGHTS

From December to January, the TSB Festival of Lights transforms New Plymouth's Pukekura Park after dark, with thousands of lighting effects and installations and daily free events. festivaloflights.co.nz

ROUND THE MOUNTAIN CYCLE CHALLENGE

Ride 150km around iconic Mount Taranaki as a solo, duo or team at this celebrated annual event.

cyclechallenge.co.nz

WOMAD – THE WORLD OF MUSIC, ARTS AND DANCE

WOMAD delivers an exhilarating weekend of global rhythms, sights and sounds in the lush surroundings of Brooklands Park and Bowl of Brooklands in New Plymouth.

womad.co.nz

AMERICARNA

Taranaki comes alive to the throb of hundreds of V8 engines with this locally created celebration of American classic car and hot rod culture. americarna.com

WHANGAMŌMONA REPUBLIC DAY

The historic village of Whangamōmona holds its republic celebrations every second January, complete with elections and quirky rural events. Next up in 2023.

whangamomonahotel.co.nz

CONCERTS AT THE BOWL OF BROOKLANDS

Catch top national and international acts at this stunning outdoor amphitheatre. taranaki.co.nz/visit

FEASTIVAL

Feastival Taranaki combines local food collaboration & the seasonal and rich bounty of our region & people. The Summer event celebrates all the amazing things about summer in Taranaki – the amazing food grown here, the talented people who create it & the unique places where we experience it. feastival.co.nz

AUTUMN

OXFAM TRAILWALKER

Oxfam Trailwalker is the most life-changing, team-building, foot-slogging, friendship-forming, group-hugging experience...ever! Teams of 4 walk either 50km in under 18hours or 100km in under 36 hours fundraising to support Oxfam's work improving lives all across the pacific.

oxfamtrailwalker.org.nz

TARANAKI BEER FESTIVAL

Featuring over 30 of the best craft breweries from Taranaki and around the country this festival will showcase craft beers, cider and seltzer. taranakibeerfestival.co.nz

TASTE & TALES

A guided behind the scenes taste trail that showcases some of the regions top food and beverage producers. There are a number of trails to choose from so options for all!

tasteandtales.co.nz

TARANAKI TRI FESTIVAL

Top triathletes sample Taranaki's landscape in short course action. itunewplymouthtriathlon.co.nz

WINTER

CAPE EGMONT HALF MARATHON

This event supports the Taranaki Cancer Society and is held virtually as well as physically in July. capeegmonthalf.com

RIGHT ROYAL CABARET FEST

Set to warm up winter with four nights of cabaret. The diverse programme includes music, comedy, theatre and more. Rightroyal.co.nz



Photo: Charlotte Curd

SPRING

JENNIAN HOMES CHARLES TOUR

Also known as the Taranaki Open, this is held at New Plymouth Golf Club and attracts amateur as well as professional golfers.

newplymouthgolf.co.nz

CENTURIA GARDEN FESTIVAL

The premier festival of Taranaki's gardens presents more than 50 gardens and a vibrant events programme.

taff.co.nz

SUSTAINABLE BACKYARDS TOUR

The Trail involves individuals, families, and community organisations generously opening their 'backyards' to the public to inspire us with their creativity, innovation, and dedication to living a more sustainable lifestyle.

sustainablebackyards.org.nz

TARANAKI ARTS TRAIL

Get a glimpse inside the studios of more than 70 of the region's top artists. taranakiartstrail.co.nz

TARANAKI FRINGE GARDEN FESTIVAL

Offering a wonderfully eclectic mix of gardens, a fascinating vintage trail and much more.

taranakigardens.com

SPIEGEL FEST

An intense weekend of comedy, music and cabaret held in the Spiegletent. taff.co.nz

NZ TATTOO & ART FESTIVAL

In November Taranaki welcomes the New Zealand Tattoo & Art Festival, Australasia's largest tattoo event.

nztattooart.com

ŌAKURA ARTS TRAIL

Explore the coastal village of Ōakura and its artists.

oakuraarts.co.nz

TARANAKI STEELFORMERS ROUND THE MOUNTAIN RELAY

An all-night, all-day relay event. Walking, running and composite teams of between 10 and 16 members complete the 150km route around Mt Taranaki. eventstaranaki.co.nz

COASTAL FIVE

Run or walk one or all five events over two days amongst the spectacular Taranaki scenery. coastalfive.co.nz

For information on these and many other events
visit taranaki.co.nz

YOUR LOCAL TEAM

Your Port Taranaki Team

ROSS DINGLE

HEAD OF COMMERCIAL

+64 27 310 5112

rdingle@porttaranaki.co.nz

HANNAH HASKELL

OPERATIONS PLANNER

+64 27 467 9456

hhaskell@porttaranaki.co.nz

VENTURE TARANAKI

Taranaki's Regional Development Agency

50 Devon Street West, or PO Box 670

Venture Taranaki

For product related queries and connections to experiences on ground.

MELISSA DEVINE

VISITOR AND EVENTS ADVISOR

+64 6 759 5150 or +64 21 454 338

Melissa.Devine@venture.org.nz

Taranaki's Regional Development Agency

50 Devon Street West, or PO Box 670 New Plymouth, Taranaki

+64 6 759 5150

info@venture.org.nz

Facebook: TaranakiNZ

Twitter: @Taranaki_NZ

<https://www.venture.org.nz/sector-development/visitor-sector/cruise/>

venture
TARANAKI
Te Puna Umanga

Taranaki's Regional Development Agency

50 Devon Street West, PO Box 670
New Plymouth 4340, New Zealand

T+64 6 759 5150

E info@venture.org.nz

taranaki.co.nz

An initiative of



Te Kaunihera-ā-Rohe o Ngāmotu

**New Plymouth
District Council**