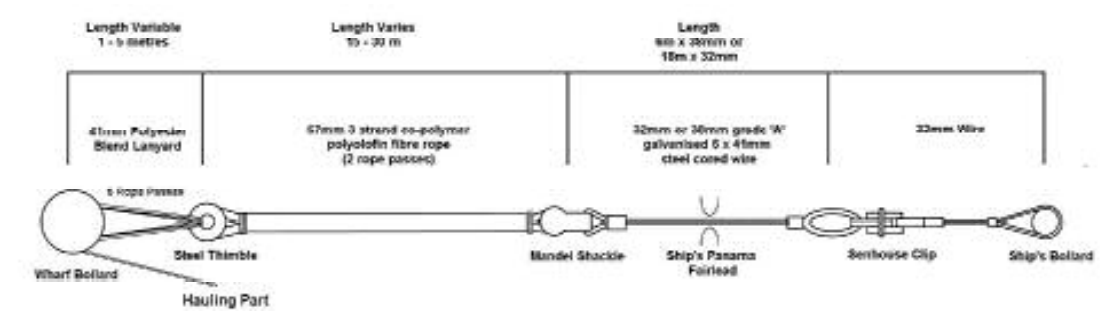
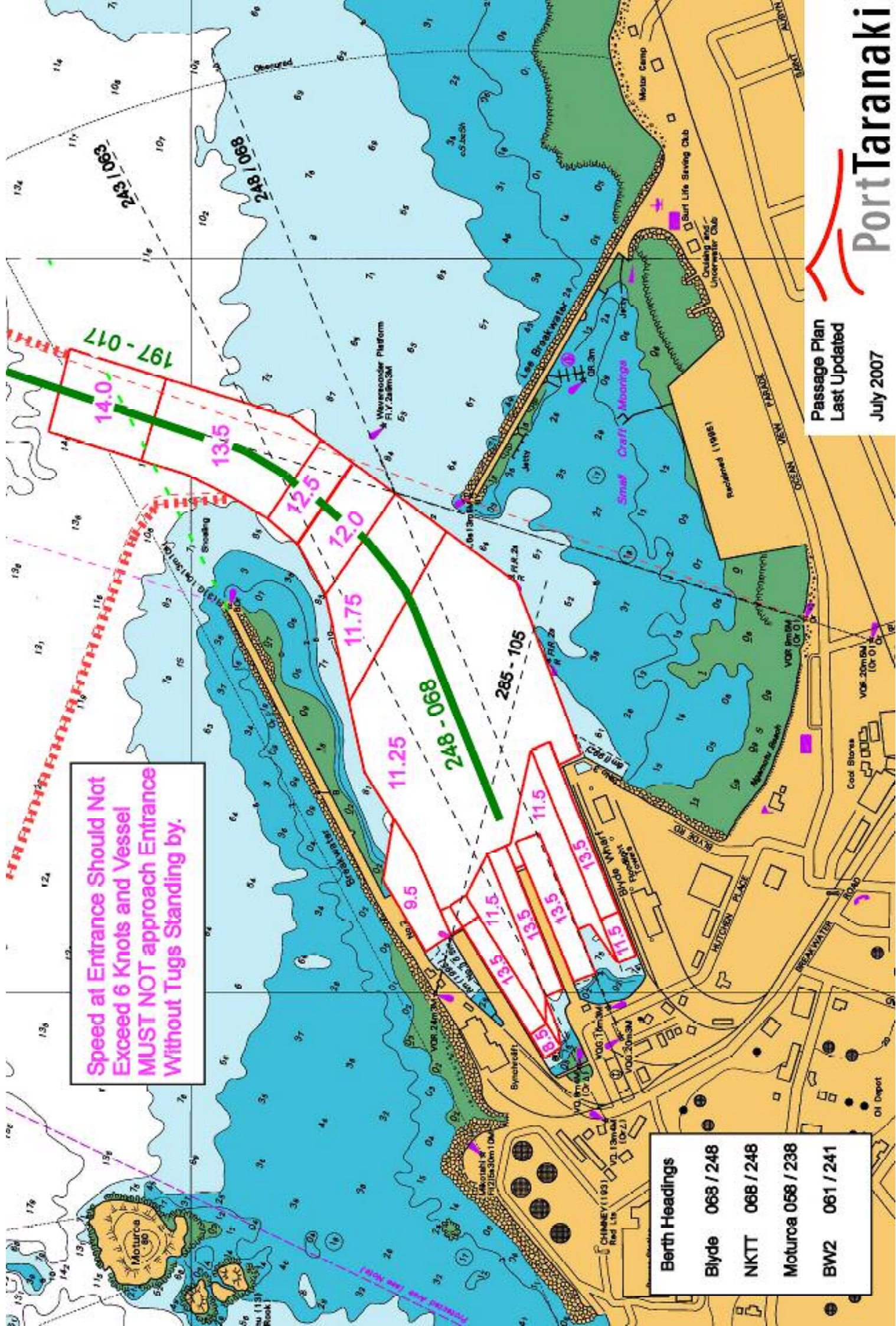


**MOORING LINE ADJUSTMENTS WHILE BERTHED**  
 Shore supplied moorings are regularly tended by shore personnel.  
 If Masters have concerns at any time regarding the mooring or fender systems, then they are advised to call "NEW PLYMOUTH HARBOUR RADIO" on VHF Channel 12 or by telephone using number (06) 7510200

**HEAVING LINES REQUIRED FOR TUGS.  
 HEAVY MESSAGERS NOT ACCEPTABLE**





Speed at Entrance Should Not Exceed 6 Knots and Vessel MUST NOT approach Entrance Without Tugs Standing by.

Berth Headings
Blyde 068 / 248
NKTT 068 / 248
Moturca 058 / 238
BW2 061 / 241

Passage Plan  
Last Updated  
July 2007

